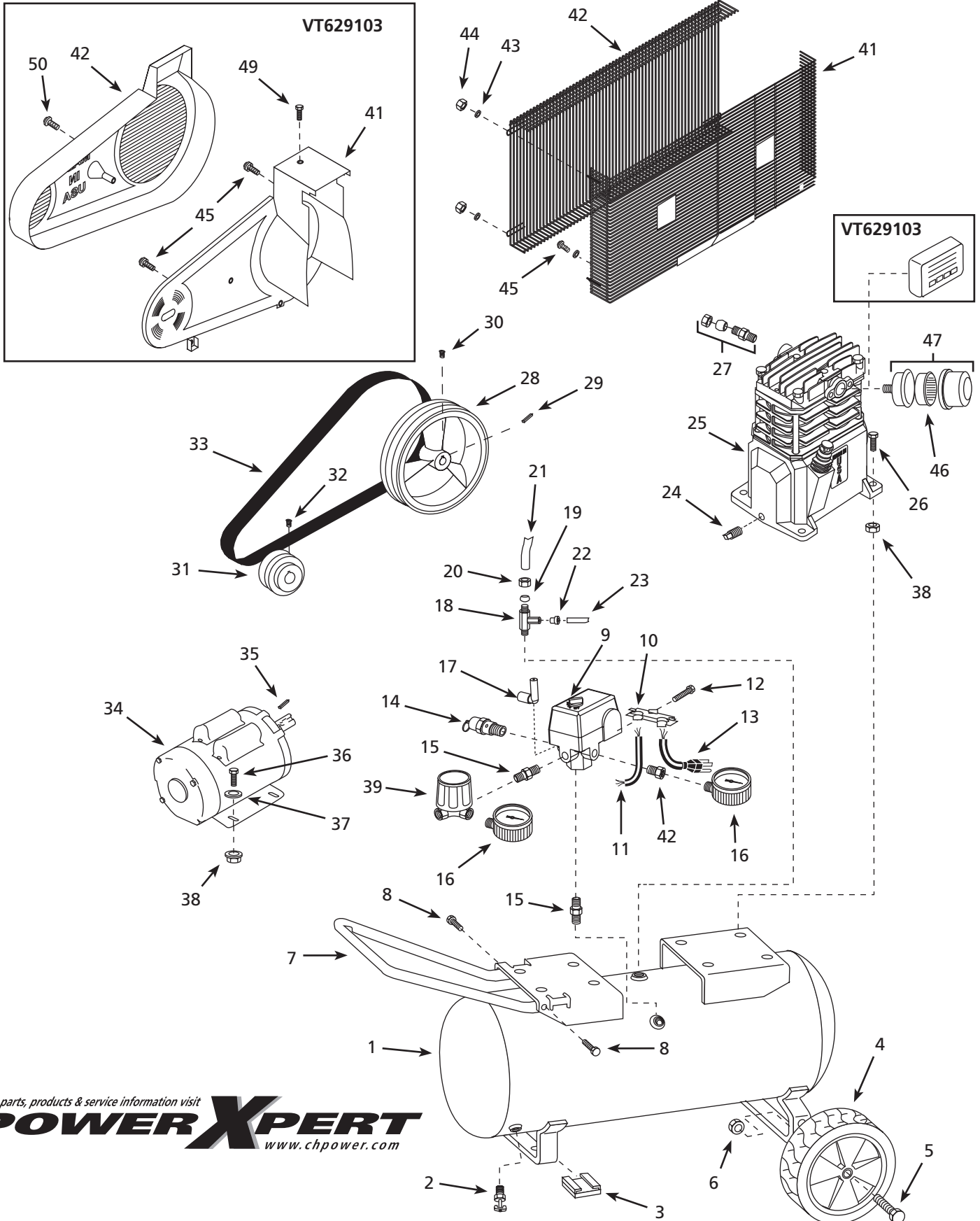


Replacement Parts List  
Liste De Pièces De Rechange  
Lista De Repuestos

VT631800, VT629102, & VT629103



For parts, products & service information visit  
**POWER XPERT**  
www.chpower.com

**For Replacement Parts or Technical Assistance, Call 1-800-543-6400**

Address parts correspondence to:

Campbell Hausfeld  
 Attn: Customer Service  
 100 Production Drive  
 Harrison, OH 45030 USA

Please provide the following information:

- Model number
- Serial number (if any)
- Part description and number as shown in parts list

Check your model number



Ref.	Description	VT631800	VT629102	VT629103	Qty.
1	Tank	AR040500BR	AR040500BR	AR040500BR	1
2	Drain cock	D-1401	D-1401	D-1401	1
3	Foot	ST041600AV	ST041600AV	ST041600AV	2
4	10 inch Wheel	WA004500AV	WA004500AV	WA004500AV	2
5	Axle bolt	ST084700AV	ST084700AV	ST084700AV	2
6	Hex keps nut	ST033500AV	ST033500AV	ST033500AV	2
7	Handle	HL003900AV	HL003900AV	HL003900AV	1
8	Handle screw	ST073236AV	ST073236AV	ST073236AV	2
9	Pressure switch	CW209000AJ	CW209000AJ	CW209000AJ	1
10	Strain relief	CW209500AV	CW209500AV	CW209500AV	1
11	Motor cord	EC012800AV	EC012800AV	EC012800AV	1
12	Strain relief screw	ST209800AV	ST209800AV	ST209800AV	1
13	Power cord	EC012601AV	EC012601AV	EC012601AV	1
14	ASME Safety valve	V-215105AV	V-215105AV	V-215105AV	1
15	1/4 inch Nipple	HF002401AV	HF002401AV	HF002401AV	2
16	Gauge	GA016300AV	GA016300AV	GA016300AV	2
17	Unloader	CW210000AV	CW210000AV	CW210000AV	1
18	Check valve	CV221502AJ	CV221502AJ	CV221502AJ	1
19	Ferrule	ST067300AV	ST067300AV	ST067300AV	1
20	Compression nut	ST033001AV	ST033001AV	ST033001AV	1
21	Discharge tube	VT043500AP	VT043500AP	VT043500AP	1
22	Push-in fitting	ST081301AV	ST081301AV	ST081301AV	1
23	Unloader tube	ST117801AV	ST117801AV	ST117801AV	1
24	1/8 inch-27 Oil drain plug	ST022300AV	ST022300AV	ST022300AV	1
25	Pump	VT470200KB	VT470200KB	VT470200KB	1
26	5/16 inch-18 x 1/4 inch Hex head screw	ST012800AV	ST012800AV	ST012800AV	4
27	Compression connector assembly	ST018300AV	ST018300AV	ST018300AV	1
28	Flywheel	PU015900AG	PU015900AG	PU015900AG	1
29	3/16 inch Key	KE000900AV	KE000900AV	KE000900AV	1
30	3/8 inch -16 x 3/4 inch Setscrew	ST026200AV	ST026200AV	ST026200AV	1
31	Pulley	PU015200AG	PU015200AG	PU015200AG	1
32	1/4 inch - 20 x 1/2 inch Setscrew	ST012200AV	ST012200AV	ST012200AV	1
33	Belt	BT020400AV	BT020400AV	BT020400AV	1
34	Electric motor	MC018000AJ	MC018000AJ	MC018000AJ	1
35	3/16 inch sq. x 1/4 inch Key	KE000903AV	KE000903AV	KE000903AV	2
36	5/16 inch - 18 Hex head screw	ST016000AV	ST016000AV	ST016000AV	4
37	5/16 inch Washer	ST011200AV	ST011200AV	ST011200AV	4
38	5/16 inch - 18 Locknut	ST146000AV	ST146000AV	ST146000AV	8
39	Regulator	RE206203AV	RE206203AV	RE206203AV	1
40	1/4 inch x 1/8 inch Reducer	ST071407AV	ST071407AV	ST071407AV	1
41	Belt guard (back)	BG218700AV	BG218700AV	BG217902AV	1
42	Belt guard (front)	BG218800AV	BG218800AV	BG217800AV	1
43	#10 Flatwasher	ST070906AV	ST070906AV	—	6
44	#10-24 Nut	ST163200AV	ST163200AV	—	4
45	#10-24 - 5/16 inch Self-tapping screw	ST042400AV	ST042400AV	ST042400AV	3
46	Filter element	WL012300AV	ST073916AV	—	1
47	Solberg filter assembly	WL012000AV	ST073915AV	—	1
48	Δ Warning decal (3 piece)	DK630000AV	DK630000AV	DK630000AV	1
49	5mm x 25mm Self-tapping screw	—	—	ST073269AV	1
50	Plascrew	—	—	ST058502AV	1
51	Δ Inspection port reducer 1/2inch x 1/4 inch	PG150008AV	PG150008AV	PG150008AV	2
52	Δ Inspection port o-ring	ST070191AV	ST070191AV	ST070191AV	2
Δ	Not shown				

**Pour les Pièces de Rechange ou l'assistance technique,  
Composer le 1-800-543-6400**

S'il vous plaît fournir l'information suivant:

- Numéro du modèle
- Numéro de série (s'il y en a un)
- Description de la pièce et son numéro sur la liste

Correspondance:

Campbell Hausfeld  
Attn: Customer Service  
100 Production Drive  
Harrison, OH 45030 USA

Marquer votre numéro du modèle

N° de Réf.	Description	VT631800	VT629102	VT629103	Qte.
1	Réservoir	AR040500BR	AR040500BR	AR040500BR	1
2	Robinet de purge	D-1401	D-1401	D-1401	1
3	Pied	ST041600AV	ST041600AV	ST041600AV	2
4	Roue de 25,4 cm	WA004500AV	WA004500AV	WA004500AV	2
5	Boulon d'essieu	ST084700AV	ST084700AV	ST084700AV	2
6	Écrou hexagonal keps	ST033500AV	ST033500AV	ST033500AV	2
7	Poignée	HL003900AV	HL003900AV	HL003900AV	1
8	Vis de poignée	ST073236AV	ST073236AV	ST073236AV	2
9	Manostat	CW209000AJ	CW209000AJ	CW209000AJ	1
10	Soulagement de tension	CW209500AV	CW209500AV	CW209500AV	1
11	Cordon du moteur	EC012800AV	EC012800AV	EC012800AV	1
12	Vis de soulagement de tension	ST209800AV	ST209800AV	ST209800AV	1
13	Cordon d'alimentation	EC012601AV	EC012601AV	EC012601AV	1
14	Soupape de sûreté ASME	V-215105AV	V-215105AV	V-215105AV	1
15	Mamelon 1/4 po	HF002401AV	HF002401AV	HF002401AV	2
16	Manomètre	GA016300AV	GA016300AV	GA016300AV	2
17	Déchargeur	CW210000AV	CW210000AV	CW210000AV	1
18	Clapet	CV221502AJ	CV221502AJ	CV221502AJ	1
19	Virole	ST067300AV	ST067300AV	ST067300AV	1
20	Écrou de compression	ST033001AV	ST033001AV	ST033001AV	1
21	Tuyau de d'échange	VT043500AP	VT043500AP	VT043500AP	1
22	Raccord enfichable	ST081301AV	ST081301AV	ST081301AV	1
23	Tuyau de déchargement	ST117801AV	ST117801AV	ST117801AV	1
24	Bouchon de vidange d'huile 1/8 po -27	ST022300AV	ST022300AV	ST022300AV	1
25	Pompe	VT470200KB	VT470200KB	VT470200KB	1
26	Vis à tête hexagonale 5/16 po -18 x 1-1/4 po	ST012800AV	ST012800AV	ST012800AV	4
27	Assemblage de compression	ST018300AV	ST018300AV	ST018300AV	1
28	Volant	PU015900AG	PU015900AG	PU015900AG	1
29	Clavette 3/16 po	PU015900AG	PU015900AG	KE000900AV	1
30	Vis de pression 3/8 po - 16 x 3/4 po	ST026200AV	ST026200AV	ST026200AV	1
31	Poulie	PU015200AG	PU015200AG	PU015200AG	1
32	Vis de pression 1/4 po - 20 x 1/2 po	ST012200AV	ST012200AV	ST012200AV	1
33	Courroie	BT020400AV	BT020400AV	BT020400AV	1
34	Moteur électrique	MC018000AJ	MC018000AJ	MC018000AJ	1
35	Clavette 3/16 po sq. x 1-1/4 po	KE000903AV	KE000903AV	KE000903AV	2
36	Vis à tête hexagonale 5/16 po - 18	ST016000AV	ST016000AV	ST016000AV	4
37	Rondelle 5/16 po	ST011200AV	ST011200AV	ST011200AV	4
38	Contre-écrou 5/16 po - 18	ST146000AV	ST146000AV	ST146000AV	8
39	Régulateur	RE206203AV	RE206203AV	RE206203AV	1
40	Raccord de réduction 1/4 po x 1/8 po	ST071407AV	ST071407AV	ST071407AV	1
41	Carter de courroie (arrière)	BG218700AV	BG218700AV	BG217902AV	1
42	Carter de courroie (avant)	BG218800AV	BG218800AV	BG217800AV	1
43	Rondelle plate #10	ST070906AV	ST070906AV	—	6
44	Écrou #10-24	ST163200AV	ST163200AV	—	4
45	Vis autoforeuse 10-24 - 5/16 po	ST042400AV	ST042400AV	ST042400AV	3
46	Cartouche filtrante	WL012300AV	ST073916AV	—	1
47	Assemblage de filtrante	WL012000AV	ST073915AV	—	1
48	Δ Decalcomanie d'avertissement (3pièces)	DK630000AV	DK630000AV	DK630000AV	1
49	Vis autoforeuse 5mm x 25mm	—	—	ST073269AV	1
50	Vis	—	—	ST058502AV	1
51	Δ Raccord de réduction de porte de inspection 1½ po x 1/4 po	PG150008AV	PG150008AV	PG150008AV	2
52	Δ Joint torique de porte de inspection	ST070191AV	ST070191AV	ST070191AV	2
Δ	Pas indiquée				

## Para Ordenar Repuestos o Asistencia Técnica, Sírvase Llamar al Distribuidor Más Cercano a Su Domicilio

Sírvase darnos la siguiente información:

- Número del modelo
- Número de serie (de haberlo)
- Descripción y número del repuesto según la lista de repuestos

Puede escribirnos a:

Campbell Hausfeld  
Attn: Customer Service  
100 Production Drive  
Harrison, OH 45030 USA

Marcar su número del modelo

No. de Ref.	Descripción	VT631800	VT629102	VT629103	Ctd.
1	Tanque	AR040500BR	AR040500BR	AR040500BR	1
2	Llave de salida	D-1401	D-1401	D-1401	1
3	Pata	ST041600AV	ST041600AV	ST041600AV	2
4	Rueda de 25,4 cm	WA004500AV	WA004500AV	WA004500AV	2
5	Perno del eje	ST084700AV	ST084700AV	ST084700AV	2
6	Tuerca hex	ST033500AV	ST033500AV	ST033500AV	2
7	Mango	HL003900AV	HL003900AV	HL003900AV	1
8	Tornillo del mango	ST073236AV	ST073236AV	ST073236AV	2
9	Presostato	CW209000AJ	CW209000AJ	CW209000AJ	1
10	Relevo de tensión	CW209500AV	CW209500AV	CW209500AV	1
11	Cordón del motor	EC012800AV	EC012800AV	EC012800AV	1
12	Parafuso do alivio de tensão	ST209800AV	ST209800AV	ST209800AV	1
13	Cordon eléctrico	EC012601AV	EC012601AV	EC012601AV	1
14	Válvula de seguridad ASME	V-215105AV	V-215105AV	V-215105AV	1
15	Niple de 6,4 mm (1/4 inch)	HF002401AV	HF002401AV	HF002401AV	2
16	Manómetro	GA016300AV	GA016300AV	GA016300AV	2
17	Descarregador	CW210000AV	CW210000AV	CW210000AV	1
18	Válvula de chequeo	CV221502AJ	CV221502AJ	CV221502AJ	1
19	Manga	ST067300AV	ST067300AV	ST067300AV	1
20	Tuerca de compresión	ST033001AV	ST033001AV	ST033001AV	1
21	Tubo de descarga	VT043500AP	VT043500AP	VT043500AP	1
22	Adjuste de empuje	ST081301AV	ST081301AV	ST081301AV	1
23	Tubo de desfogue	ST117801AV	ST117801AV	ST117801AV	1
24	Tapón de 3,2 mm (1/8 inch)-27 para el drenaje de aceite	ST022300AV	ST022300AV	ST022300AV	1
25	Cabezal	VT470200KB	VT470200KB	VT470200KB	1
26	Tornillo hex de 7,9 mm (5/16 inch)-18 x 3,18 cm (1¼ inch)	ST012800AV	ST012800AV	ST012800AV	4
27	Ensamblaje de compresión	ST018300AV	ST018300AV	ST018300AV	1
28	Volante	PU015900AG	PU015900AG	PU015900AG	1
29	Chaveta de 4,8 mm (3/16 inch)	KE000900AV	KE000900AV	KE000900AV	1
30	Tornillo de 4,8 mm (3/8 inch) -16 x 19,1 mm (3/4 inch)	ST026200AV	ST026200AV	ST026200AV	1
31	Polea	PU015200AG	PU015200AG	PU015200AG	1
32	Tornillo de 6,4 mm (1/4 inch) - 20 x 12,7 mm (1/2 inch)	ST012200AV	ST012200AV	ST012200AV	1
33	Banda	BT020400AV	BT020400AV	BT020400AV	1
34	Motor eléctrico	MC018000AJ	MC018000AJ	MC018000AJ	1
35	Chaveta de 4,8 mm (3/16 inch sq. x 3,18 cm (1¼ inch)	KE000903AV	KE000903AV	KE000903AV	2
36	Tornillo hex de 7,9 mm (5/16 inch) - 18	ST016000AV	ST016000AV	ST016000AV	4
37	Arandela 7,9 mm (5/16 inch)	ST011200AV	ST011200AV	ST011200AV	4
38	Tuerca de 7,9 mm (5/16 inch) - 18	ST146000AV	ST146000AV	ST146000AV	8
39	Regulador	RE206203AV	RE206203AV	RE206203AV	1
40	Reductor 6,4 mm (1/4 inch) x 3,2 mm (1/8 inch)	ST071407AV	ST071407AV	ST071407AV	1
41	Tapa protectora de bandas (posterior)	BG218700AV	BG218700AV	BG217902AV	1
42	Tapa protectora de bandas (frontal)	BG218800AV	BG218800AV	BG217800AV	1
43	Arandela plana #10	ST070906AV	ST070906AV	—	6
44	Tuerca #10-24	ST163200AV	ST163200AV	—	4
45	Tornillo autorrosante de #10-24 - 7,9 mm (5/16 inch)	ST042400AV	ST042400AV	ST042400AV	3
46	Elemento del filtro	WL012300AV	ST073916AV	—	1
47	Ensamblaje del filtro	WL012000AV	ST073915AV	—	1
48	Δ Etiquetas de advertencia (3)	DK630000AV	DK630000AV	DK630000AV	1
49	Tornillo autorrosante de 5mm x 25 mm	—	—	ST073269AV	1
50	Tornillo	—	—	ST058502AV	1
51	Δ Reductor de orificio de inspección 3,81 cm x 6,4 mm (1½ inch x 1/4 inch)	PG150008AV	PG150008AV	PG150008AV	2
52	Δ Anillo en o para el orificio de inspección	ST070191AV	ST070191AV	ST070191AV	2
Δ	No se muestra				