



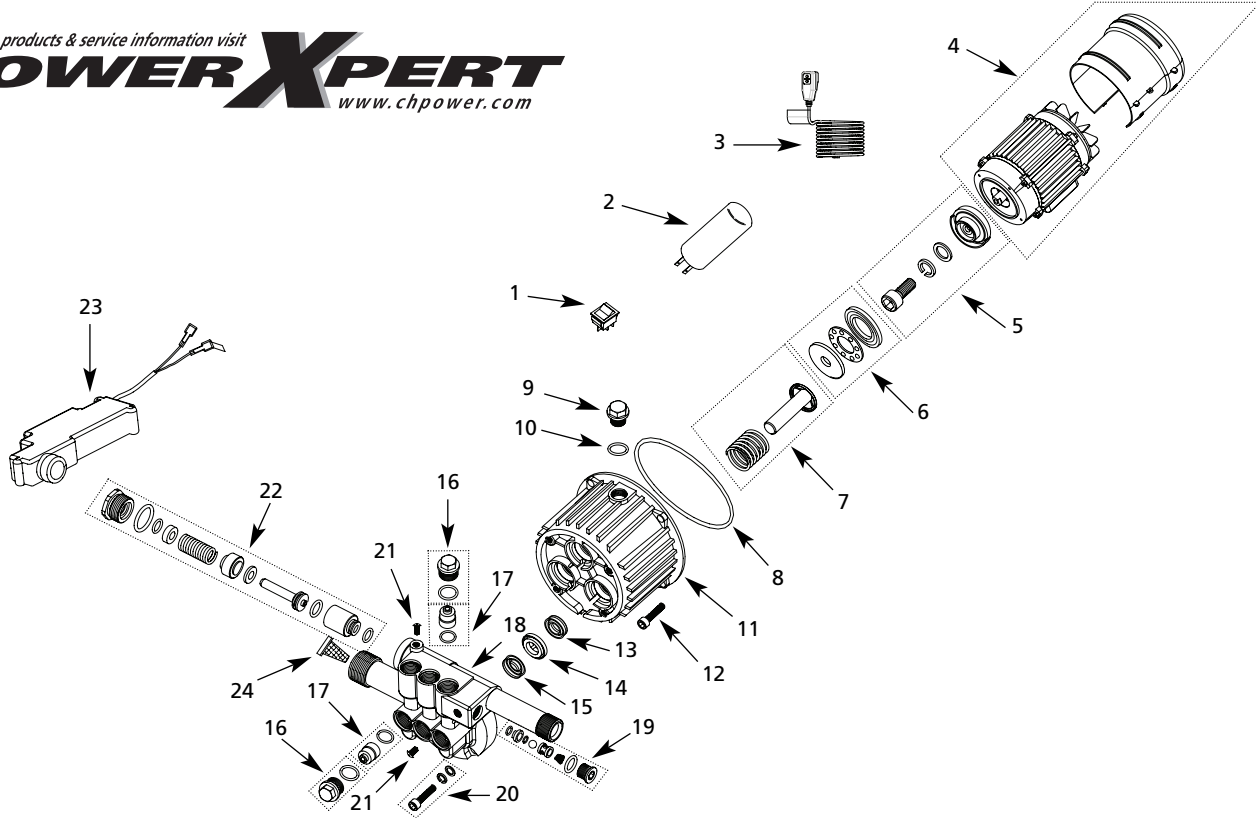
**CAMPBELL  
HAUSFELD®**  
BUILT TO LAST

# Motor/Pump Serviceable Components

## Replacement Parts List

PW132000AV

For parts, products & service information visit  
**POWER XPERT**  
www.chpower.com



**For Replacement Parts or Technical Assistance, Call 1-800-330-0712**

Please provide following information:

- Model number
- Serial number (if any)
- Part description and number as shown in parts list

Address any correspondence to:

Campbell Hausfeld / Attn. Customer Service  
100 Mundy Memorial Drive  
Mt. Juliet, TN 37122 U.S.A.

| Ref. No. | Description                              | Part No.   | Qty. | Ref. No. | Description                                            | Part No.   | Qty. |
|----------|------------------------------------------|------------|------|----------|--------------------------------------------------------|------------|------|
| 1        | On/off switch                            | PM272000SV | 1    | 14       | Piston guide kit (includes 3 guides)                   | PM272130SV | 1    |
| 2        | Capacitor                                | PM272010SV | 1    | 15       | Water seal kit (includes 3 water seals)                | PM272140SV | 1    |
| 3        | Power cord, 14AWG with GFCI              | PM272020SV | 1    | 16       | Valve cap kit (incl. 3 valve caps and o-rings)         | PM272150SV | 2    |
| *4       | Motor assembly (induction type)          | PM272030SV | 1    | 17       | Inlet/outlet valve kit (includes 3 valves and o-rings) | PM272160SV | 2    |
| 5        | Wobble plate assembly                    | PM272040SV | 1    | 18       | Manifold head                                          | PM272170SV | 1    |
| 6        | Bearing kit                              | PM272050SV | 1    | 19       | Back pressure protection kit                           | PM272180SV | 1    |
| 7        | Piston kit (incl. 3 pistons and springs) | PM272060SV | 1    | 20       | Head mounting bolt kit (includes 1 bolt and 2 washers) | PM272190SV | 4    |
| 8        | O-ring, 82.2 x 2.62                      | PM272070SV | 1    | 21       | Screw, M6 x 6                                          | PM272200SV | 2    |
| 9        | Oil cap                                  | PM272080SV | 1    | 22       | Instant start/stop assembly                            | PM272210SV | 1    |
| 10       | O-ring, 9 x 1.8                          | PM272090SV | 1    | 23       | Microswitch assembly for instant start/stop            | PM272220SV | 1    |
| 11       | Pump housing                             | PM272100SV | 1    | 24       | Suction filter                                         | PM014800SV | 1    |
| 12       | Screw, M6                                | PM272110SV | 4    |          |                                                        |            |      |
| 13       | Oil seal kit (includes 3 oil seals)      | PM272120SV | 1    |          |                                                        |            |      |

\* Unit assembly may be shipped if replacement motor is not available.

Oil type: 20W, non-detergent      Oil capacity: 5.0 oz.