

Please read and save these instructions. Read carefully before attempting to assemble, install, operate or maintain the product described. Protect yourself and others by observing all safety information. Failure to comply with instructions could result in personal injury and/or property damage! Retain instructions for future reference.



Valve Plate Kit

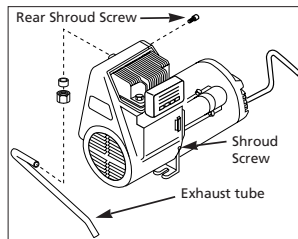


Figure 1 - Pump/Motor Assembly

- 3/4" open end wrench
 - 10 mm socket and ratchet
 - Razor blade or putty knife
1. Face cooling fan inlet of front shroud with intake filter on the right and copper discharge fitting on left.
 2. Use 3/4" wrench to disconnect exhaust tube from compressor (See Figure 1).
 3. Remove shroud by taking out two Torx screws and one phillips screw from rear of shroud.
 4. Remove four (4) head bolts with 10 mm socket and ratchet. Lift head off unit and check for sticking gasket pieces. Carefully scrape pieces off making sure not to scratch deep grooves into head.
 5. Discard used gaskets, valves and valve plate. Use new parts supplied in kit.

General Safety Information

Read this sheet carefully. Be thoroughly familiar with the controls and proper use of the equipment.



WARNING

Allow the compressor pump to cool before attempting to perform any maintenance or service or serious personal injury could occur.



WARNING

Unplug and release all air pressure from the system before attempting to install, service, relocate or perform any maintenance or serious personal injury may occur.



Unpacking

Carefully inspect for any damage that may have occurred during transit. Check kit for following parts:

- Cylinder gasket (1)
- Valve plate (1)
- Metal head gasket (1)
- Intake valve (1)
- Exhaust valve (1)
- Paper head gasket (1)

Disassembly TOOLS REQUIRED:

- Torque wrench (up to 100 in-lbs)
- T-25 Torx bit and driver or Slotted screwdriver
- Phillips screwdriver

8. Replace head bolts. Following a criss-cross pattern, torque all four head bolts to 100 in-lbs.
9. Secure shroud with shroud screws and reconnect exhaust tube.

Technical Service

For information on the operation or repair, please call 1-800-543-6400. In Ohio or outside the continental U.S., call 513-367-4811.

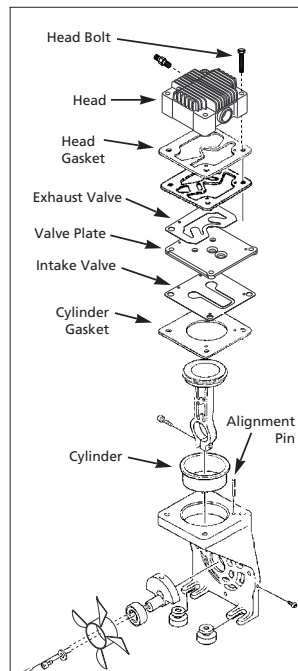


Figure 2 - Valve Plate Kit

Please read and save these instructions. Read carefully before attempting to assemble, install, operate or maintain the product described. Protect yourself and others by observing all safety information. Failure to comply with instructions could result in personal injury and/or property damage! Retain instructions for future reference.



Valve Plate Kit

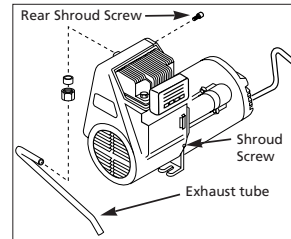


Figure 1 - Pump/Motor Assembly

- 3/4" open end wrench
 - 10 mm socket and ratchet
 - Razor blade or putty knife
1. Face cooling fan inlet of front shroud with intake filter on the right and copper discharge fitting on left.
 2. Use 3/4" wrench to disconnect exhaust tube from compressor (See Figure 1).
 3. Remove shroud by taking out two Torx screws and one phillips screw from rear of shroud.
 4. Remove four (4) head bolts with 10 mm socket and ratchet. Lift head off unit and check for sticking gasket pieces. Carefully scrape pieces off making sure not to scratch deep grooves into head.
 5. Discard used gaskets, valves and valve plate. Use new parts supplied in kit.

General Safety Information

Read this sheet carefully. Be thoroughly familiar with the controls and proper use of the equipment.



WARNING

Allow the compressor pump to cool before attempting to perform any maintenance or service or serious personal injury could occur.



WARNING

Unplug and release all air pressure from the system before attempting to install, service, relocate or perform any maintenance or serious personal injury may occur.



Unpacking

Carefully inspect for any damage that may have occurred during transit. Check kit for following parts:

- Cylinder gasket (1)
- Valve plate (1)
- Metal head gasket (1)
- Intake valve (1)
- Exhaust valve (1)
- Paper head gasket (1)

Disassembly TOOLS REQUIRED:

- Torque wrench (up to 100 in-lbs)
- T-25 Torx bit and driver or Slotted screwdriver
- Phillips screwdriver

8. Replace head bolts. Following a criss-cross pattern, torque all four head bolts to 100 in-lbs.
9. Secure shroud with shroud screws and reconnect exhaust tube.

Technical Service

For information on the operation or repair, please call 1-800-543-6400. In Ohio or outside the continental U.S., call 513-367-4811.

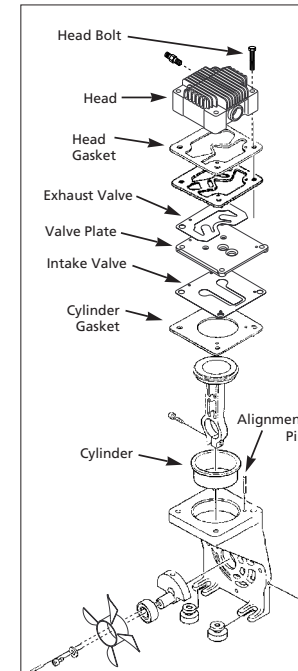


Figure 2 - Valve Plate Kit