

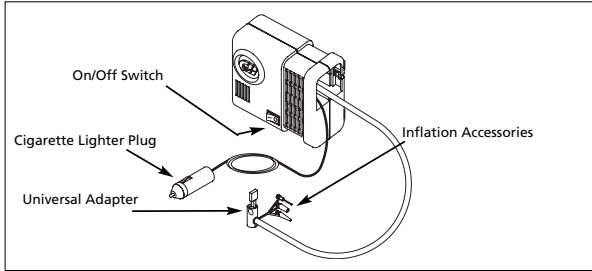


12-Volt Compact Inflator

Specifications and Features

RP0500

Maximum Pressure	...250 psi
Continuous SCFM	...0.44 @ 30 psi
	0.38 @ 30 psi
Weight	...2.3 lbs
Voltage	...12 Volt DC
Air Outlet	...Universal Adapter
Features	...Inflation Nozzles (2)
	Inflator Needle
	Cooling Fan



Limited Warranty

- DURATION:** From the date of purchase by the original purchaser as follows: One Year.
 - WHO GIVES THIS WARRANTY (WARRANTOR):** Campbell Hausfeld / Scott Fetzer Company, 100 Production Drive, Harrison, Ohio, 45030, Telephone: (800) 543-6400
 - WHO RECEIVES THIS WARRANTY (PURCHASER):** The original purchaser (other than for purposes of resale) of the Campbell Hausfeld product.
 - WHAT PRODUCTS ARE COVERED BY THIS WARRANTY:** Any Campbell Hausfeld nailer, stapler, air tool, spray gun, inflator or air accessory supplied or manufactured by Warrantor.
 - WHAT IS COVERED UNDER THIS WARRANTY:** Substantial defects in material and workmanship which occur within the duration of the warranty period.
 - WHAT IS NOT COVERED UNDER THIS WARRANTY:**
 - Implied warranties, including those of merchantability and FITNESS FOR A PARTICULAR PURPOSE ARE LIMITED FROM THE DATE OF ORIGINAL PURCHASE AS STATED IN THE DURATION. If this product is used for commercial, industrial or rental purposes, the warranty will apply for ninety (90) days from the date of purchase. Some States do not allow limitation on how long an implied warranty lasts, so the above limitations may not apply to you.
 - ANY INCIDENTAL, INDIRECT, OR CONSEQUENTIAL LOSS, DAMAGE, OR EXPENSE THAT MAY RESULT FROM ANY DEFECT, FAILURE, OR MALFUNCTION OF THE CAMPBELL HAUSFELD PRODUCT. Some States do not allow the exclusion or limitation of incidental or consequential damages, so the above limitation or exclusion may not apply to you.
 - Any failure that results from an accident, purchaser's abuse, neglect or failure to operate products in accordance with instructions provided in the owner's manual(s) supplied with product. Accident, purchaser's abuse, neglect or failure to operate products in accordance with instructions shall also include the removal or alteration of any safety devices. If such safety devices are removed or altered, this warranty is void.
 - Normal adjustments which are explained in the owner's manual(s) provided with the product.
 - Items or service that are normally required to maintain the product, i.e. o-rings, springs, bumpers, debris shields, driver blades, fuses, batteries, gaskets, packings or seals, fluid nozzles, needles, sandblast nozzles, lubricants, material hoses, filter elements, motor vanes, abrasives, blades, cut-off wheels, chisels, chisel retainers, cutters, collets, chucks, rivet jaws, screw driver bits, sanding pads, back-up pads, impact mechanism, or any other expendable part not specifically listed. These items will only be covered for ninety (90) days from date of original purchase. Underlined items are warranted for defects in material and workmanship only.
 - RESPONSIBILITIES OF WARRANTOR UNDER THIS WARRANTY:** Repair or replace, at Warrantor's option, products or components which are defective, have malfunctioned and/or failed to conform within duration of the warranty period.
 - RESPONSIBILITIES OF PURCHASER UNDER THIS WARRANTY:**
 - Provide dated proof of purchase and maintenance records.
 - Deliver or ship the Campbell Hausfeld product or component to the nearest Campbell Hausfeld Authorized Service Center. Freight costs, if any, must be borne by the purchaser.
 - Use reasonable care in the operation and maintenance of the products as described in the owner's manual(s).
 - WHEN WARRANTOR WILL PERFORM REPAIR OR REPLACEMENT UNDER THIS WARRANTY:** Repair or replacement will be scheduled and serviced according to the normal work flow at the servicing location, and depending on the availability of replacement parts.
- This Limited Warranty applies in the United States, Canada and Mexico only and gives you specific legal rights. You may also have other rights which vary from state to state or country to country.

www.chpower.com

See Warranty for important information about commercial use of this product.

Operating Instructions

RP0500

Please read and save these instructions. Read carefully before attempting to assemble, install, operate or maintain the product described. Protect yourself and others by observing all safety information. Failure to comply with instructions could result in personal injury and/or property damage! Retain instructions for future reference.



12-Volt Compact Inflator

Description

The 12-volt inflator comes with two (2) inflation nozzles and a needle. The inflator can be used for emergency roadside tire inflation and to inflate bike tires, soccer balls, beach balls and other sporting equipment.

Unpacking

When unpacking this product, carefully inspect for any damage that may have occurred during transit.

Safety Guidelines

This manual contains information that is very important to know and understand. This information is provided for SAFETY and to PREVENT EQUIPMENT PROBLEMS. To help recognize this information, observe the following symbols.

⚠ DANGER Danger indicates an imminently hazardous situation which, if not avoided, WILL result in death or serious injury.

⚠ WARNING Warning indicates a potentially hazardous situation which, if not avoided, COULD result in death or serious injury.

⚠ CAUTION Caution indicates a potentially hazardous situation which, if not avoided, MAY result in minor or moderate injury.

ℹ NOTICE Notice indicates important information, that if not followed, may cause damage to equipment.

General Safety

Completely read the manual included with this product carefully. Be thoroughly familiar with the proper use of the unit.



Any misuse of unit could cause property or equipment damage and/or personal injury.

CALIFORNIA PROPOSITION 65

⚠ WARNING

This product or its power cord contains lead, a chemical known to the State of California to cause cancer and birth defects or other reproductive harm. Wash hands after handling.

⚠ WARNING Do not leave the inflator unattended while the unit is running.

⚠ WARNING

Never exceed the recommended pressure for any inflatable object. Do not over inflate objects. Over inflation could cause property damage and/or personal injury.

⚠ WARNING The universal adapter must be locked to secure the inflation accessories. Use extreme caution when using inflation accessories.

⚠ WARNING Always put the car in park; set the emergency brake; and chock the wheels before using the inflator or property damage and/or personal injury could occur.

⚠ CAUTION Always use a separate pressure gauge to check the actual pressure in tires and in low pressure inflatable objects.

⚠ CAUTION Inflator must cool for 20 minutes after 20 minutes of continuous operation. The inflator is not designed to operate continuously for more than 20 minutes.

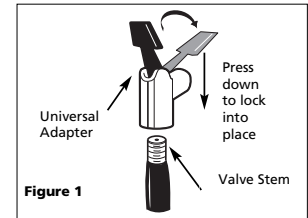
ℹ NOTICE Do not use inflator on high pressure tires used on large trucks, trailers or tractors. The inflator is not designed to operate for the length of time necessary to inflate these tires.

ℹ NOTICE Make sure the universal adapter touches the core or tire valve stem.

Operation

TIRES

Remove valve stem cap. Attach the universal adapter from the inflator to the valve stem with the lever in the up position. Be sure to press universal adapter down over valve stem threads completely. When universal adapter is firmly in place, press locking lever down to lock onto valve stem (See Fig. 1).



INFLATABLES

- To use the inflation accessories, snap either piece into the universal adapter and push the lever to lock into place. The inflation accessory will fit securely.
- Insert the appropriate inflation accessory into the inflatable object (tire, football raft, etc.) and turn on the inflator.
- When the object is firm, switch the inflator off. Do not over inflate objects.

Technical Service

For information regarding the operation or repair of this product, please call 1-800-543-6400.

REMINDER: Keep your dated proof of purchase for warranty purposes! Attach it to this manual or file it for safekeeping.

© 2005 Campbell Hausfeld/Scott Fetzer

For parts, product & service information visit www.chpower.com

IN292700AV 2/05