

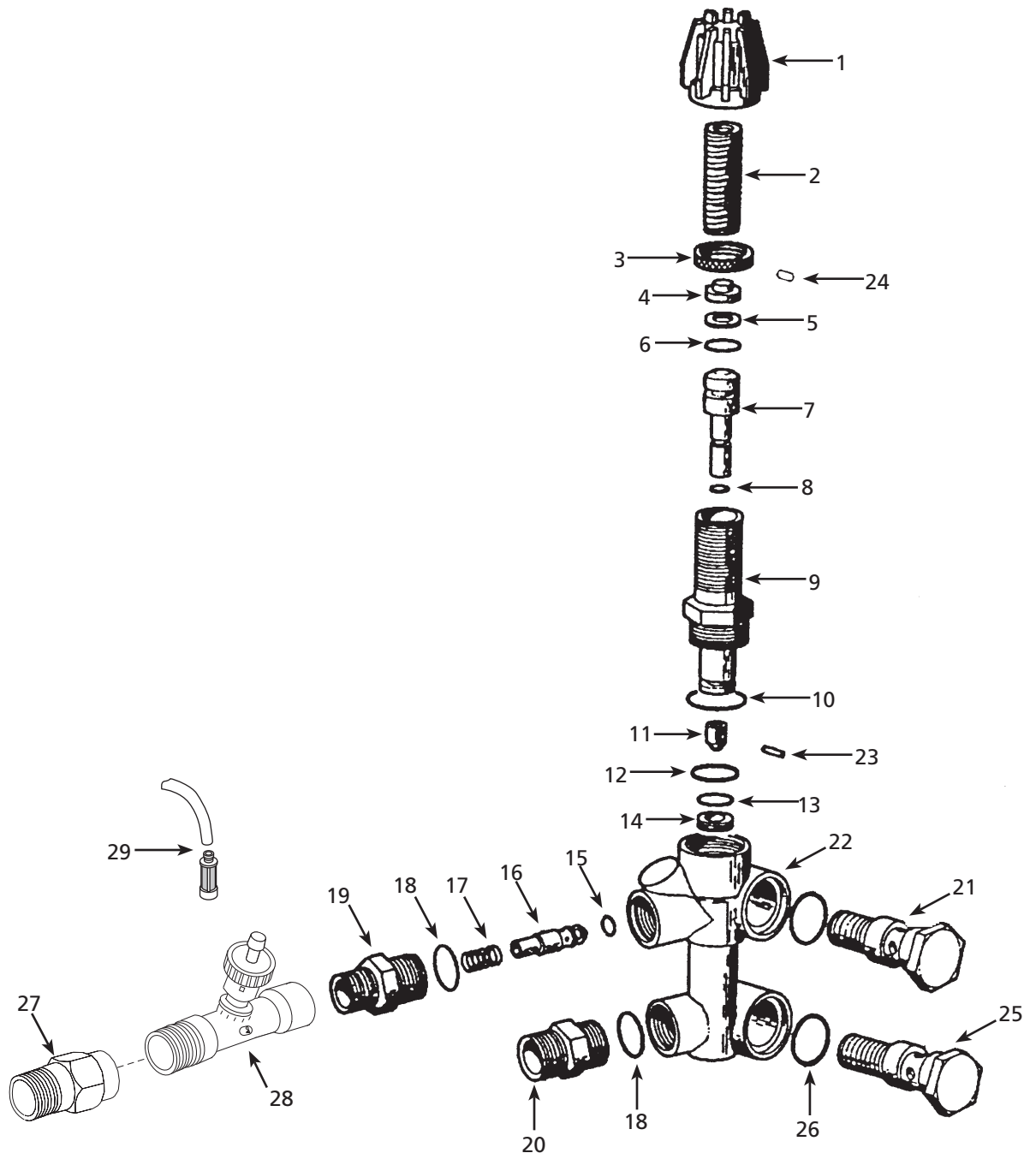
For Replacement Parts, Call 1-800-330-0712

Please provide following information:

- Model number
- Serial number (if any)
- Part descriptions and number as shown in parts list

Address parts correspondence to:

The Campbell Group
Attn: Parts Department
100 Production Drive
Harrison, OH 45030



Ref. No.	Description	Part Number	Qty
1	Adjusting knob (Black) - APR-32	PM053000SV	1
2	Comp. pressure spring	PM053200SV	1
3	Pressure lock nut	PM053300SV	1
4	Plunger contact washer	PM053400SV	1
*5	Split PTFE backring	PM053500SV	1
*6	011, NPB70, O-Ring	PM053600SV	1
7	Stainless steel plunger	PM053700SV	1
*8	006, NB70, O-Ring	PM053800SV	1
9	Yoke (Brass) - APR-32	PM053900SV	1
*10	114, NB70 O-Ring	PM054100SV	1
**11	Valve stem	PM054200SV	1
*12	111, NB70, O-Ring	PM054300SV	1
**13	8.73 x 1.78, NB70, O-Ring	PM054400SV	1
**14	Stainless steel valve seat	PM054500SV	1
*15	009, NB70, O-Ring	PM054600SV	1
16	Discharge check poppet	PM054700SV	1
17	Check poppet spring	PM054800SV	1
*18	15.00 x 1.50, NB70, O-Ring	PM054900SV	1
19	Discharge nipple (Brass) - APR-32	PM055000SV	1
20	Inlet nipple (Brass) - APR-32	PM055200SV	1
21	Outlet flow-thru bolt (Brass) - APR-32	PM055400SV	1
*22	Body (Brass) - APR-32	PM055700SV	1
23	Parallel pin	PM056000SV	1
**24	M3 x 6 Set Screw	PM056100SV	1
25	Inlet flow-thru bolt (Brass) - APR-32	PM056300SV	1
26	20.30 x 2.62, NB70 O-Ring	PM056600SV	1
27	High pressure hose fitting	PM004711AV	1
28	Chemical injector	PM004721AV	1
29	Chemical filter and suction tube	PM013800AV	1
*	1/2" Seal repair kit	PM056800SV	1
**	Valve repair kit	PM056900SV	1