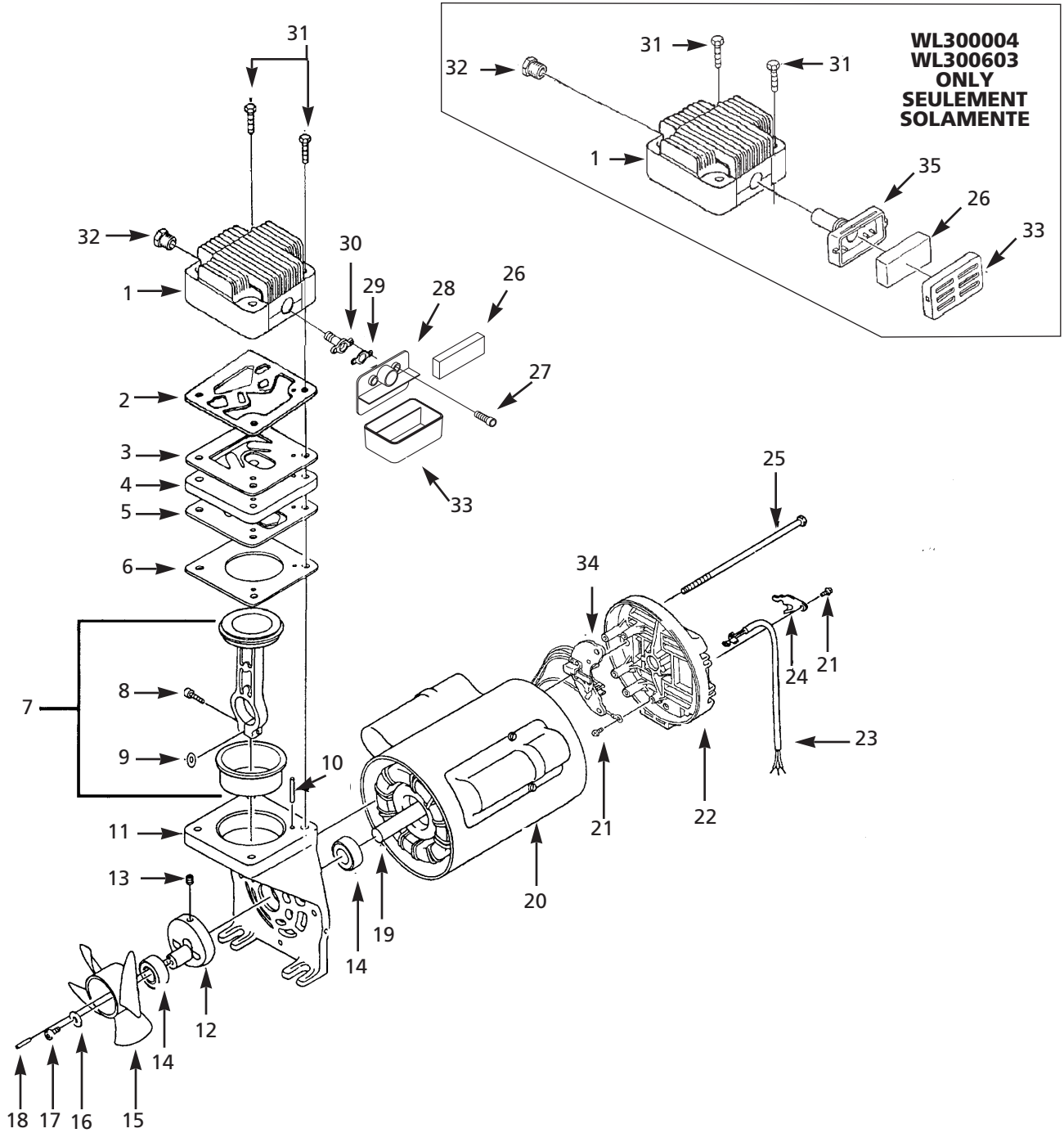


Replacement Parts List
Liste De Pièces De Rechange
Liste De Repuestos

**WL301405, WL302102, WL302502,
WL300005, WL300604**



For Replacement Parts, Call 1-800-543-6400

Please provide following information:

- Model number
- Serial number (if any)
- Part description and number as shown in parts list

Address parts correspondence to:

The Campbell Group / Attn: Parts Department
100 Production Drive
Harrison, OH 45030

Ref. No.	Description	WL301405	WL302102	WL302502	WL300005	WL300604	Qty.
1	† Head	†	†	†	WL0003010M	WL0003010M	1
2	■ Head gasket	XA010800AV	XA010800AV	XA010800AV	XA010800AV	XA010800AV	1
3	Exhaust valve	■	■	■	■	■	1
4	Valve plate	■	■	■	■	■	1
5	Intake valve	■	■	■	■	■	1
6	■ Cylinder gasket	XA010300AV	XA010301AV	XA010300AV	XA010300AV	XA010300AV	1
7	Piston and connecting rod w/sleeve (Includes nos. 8 & 9)	WL200401AJ	WL200402AJ	WL200402AJ	WL200400AJ	WL200400AJ	1
8	M5 x .8 x 20 Socket head cap screw	ST116104AV	ST116104AV	ST116104AV	ST116104AV	ST116104AV	1
9	Shim washer	ST129400AV	ST129400AV	ST129400AV	ST129400AV	ST129400AV	1
10	▲ Spiral pin, end-bell	ST158601AV	ST158601AV	ST158601AV	ST158601AV	ST158601AV	1
11	Front end-bell	▲	▲	▲	●	●	1
12	Eccentric	▲	▲	▲	●	●	1
13	M6 x 1.0 x 6 Set Screw	▲	▲	▲	●	●	2
14	Ball bearing	▲	▲	▲	● (2)	● (2)	1
15	Axial fan	WL002401AV	WL004500AV	WL004500AV	WL002400AV	WL002401AV	1
16	Washer	ST070928AV	ST070928AV	ST070928AV	ST070928AV	ST070928AV	1
17	M5 x .8 x 12 Socket head cap screw (LH)	ST116105AV	ST116105AV	ST116105AV	ST116105AV	ST116105AV	1
18	▲ Spiral pin, eccentric	ST070059AV	ST070059AV	ST070059AV	ST070059AV	ST070059AV	1
19	Rotor/shaft	▲	▲	▲	●	●	1
20	Stator assembly	MC107101AJ	MC104601AV	MC120301AJ	MC106901AJ	MC107001AJ	1
21	#8-32 x 7/16" Hex head screw	ST074407AV	ST074407AV	ST074407AV	*ST074407AV	*ST074407AV	2
22	Rear end bell	*	*	*	*	*	1
23	* Switch cord	EC012701AV	EC012701AV	EC012701AV	EC012701AV	EC012701AV	1
24	* Strain relief	MT002601AV	MT002601AV	MT002601AV	MT002600AV	MT002600AV	1
25	* Motor bolt	ST128800AV	ST128801AV	ST128801AV	ST128800AV	ST128800AV	4
26	Filter element	ST163100AV	ST163100AV	ST163100AV	WL001100AV	WL001100AV	1
27	1/4-20 x 3/4" Thread form screw	ST120200AV	ST120200AV	ST120200AV	---	---	2
28	Filter housing back	WL209000AV	WL209000AV	WL209000AV	---	---	1
29	Gasket	XA010600AV	XA010600AV	XA010600AV	---	---	1
30	Adapter	WL002800AV	WL002800AV	WL002800AV	---	---	1
31	M6 x 55mm Head bolt	ST074315AV	ST074315AV	ST074315AV	ST074315AV	ST074315AV	4
32	Compression connector	ST159001AV	ST159001AV	ST159001AV	ST159001AV	ST159001AV	1
33	Filter housing front	WL208900AV	WL208900AV	WL208900AV	WL003000AV	WL003000AV	1
34	Motor switch	MC104500AV	MC104500AV	MC104500AV	MC104500AV	MC104500AV	1
35	Filter housing back	---	---	---	WL001400AV	WL001400AV	1
REPAIR KITS							
†	Head kit (Includes ref. nos. 1 & 31)	WL602800AJ	WL602800AJ	WL602800AJ	---	---	1
■	Valve plate kit (Includes ref. nos. 2, 3, 4, 5 & 6)	WL201400AJ	WL206400AJ	WL201400AJ	WL201400AJ	WL201400AJ	1
*	Rear end bell kit	WL208316AJ	WL207101AJ	WL208316AJ	WL208316AJ	WL208316AJ	1
▲	Front end-bell & rotor kit (Includes ref. nos. 10-14, 18 & 19)	WL208202AJ	WL203600AJ	WL208201AJ	---	---	1
●	Front end bell kit	---	---	---	WL208001AJ	WL208101AJ	1

NOTES: Ref. numbers 11-14 and 19 are precisely assembled at the factory and are not available separately. Parts without a part number are available only as part of a kit.

Pour Pièces De Rechange, appeler 1-800-543-6400

S'il vous plaît fournir l'information suivant:

- Numéro du modèle
- Numéro de série (si applicable)
- Description de la pièce et son numéro sur la liste de pièces

Correspondance concernant les pièces :

The Campbell Group / Attn: Parts Department
100 Production Drive
Harrison, OH 45030 U.S.A.

N° Réf	Description	Numéro De Pièce Pour Modèles:					Qté
		WL301405	WL302102	WL302502	WL300005	WL300604	
1	Culasse	†	†	†	WL0003010M	WL0003010M	1
2	■ Joint d'étanchéité de culasse	XA010800AV	XA010800AV	XA010800AV	XA010800AV	XA010800AV	1
3	Soupape d'échappement	■	■	■	■	■	1
4	Plaque de soupape	■	■	■	■	■	1
5	Soupape d'admission	■	■	■	■	■	1
6	■ Joint d'étanchéité de cylindre	XA010300AV	XA010301AV	XA010300AV	XA010300AV	XA010300AV	1
7	Piston & bielle avec manchon (Comprend N° 8 & 9)	WL200401AJ	WL200402AJ	WL200402AJ	WL200400AJ	WL200400AJ	1
8	Vis d'assemblage à tête creuse, M5 x.8 x 20	ST116104AV	ST116104AV	ST116104AV	ST116104AV	ST116104AV	1
9	Rondelle de cale	ST129400AV	ST129400AV	ST129400AV	ST129400AV	ST129400AV	1
10	▲ Goupille vrillée, embout	ST158601AV	ST158601AV	ST158601AV	ST158601AV	ST158601AV	1
11	Embout avant	▲	▲	▲	●	●	1
12	Excentrique	▲	▲	▲	●	●	1
13	Vis de pression, M6 x 1.0 x 6	▲	▲	▲	●	●	2
14	Roulement à billes	▲	▲	▲	● (2)	● (2)	1
15	Ventilateur axial	WL002401AV	WL004500AV	WL004500AV	WL002400AV	WL002401AV	1
16	Rondelle	ST070928AV	ST070928AV	ST070928AV	ST070928AV	ST070928AV	1
17	Vis d'assemblage à tête creuse (LH), M5 x .8 x 12	ST116105AV	ST116105AV	ST116105AV	ST116105AV	ST116105AV	1
18	▲ Goupille vrillée, excentrique	ST070059AV	ST070059AV	ST070059AV	ST070059AV	ST070059AV	1
19	Rotor/arbre	▲	▲	▲	●	●	1
20	Montage de stator	MC107101AJ	MC104601AV	MC120301AJ	MC106901AJ	MC107001AJ	1
21	Vis à tête hexagonale, #8-32 x 7/16 po	ST074407AV	ST074407AV	ST074407AV	*ST074407AV	*ST074407AV	2
22	Embout femelle arrière	*	*	*	*	*	1
23	* Cordon d'interrupteur	EC012701AV	EC012701AV	EC012701AV	EC012701AV	EC012701AV	1
24	* Soulagement de tension	MT002601AV	MT002601AV	MT002601AV	MT002600AV	MT002600AV	1
25	* Boulon de moteur	ST128800AV	ST128801AV	ST128801AV	ST128800AV	ST128800AV	4
26	Cartouche filtrante	ST163100AV	ST163100AV	ST163100AV	WL001100AV	WL001100AV	1
27	Vis à filets, 1/4 po -20 x 3/4 po	ST120200AV	ST120200AV	ST120200AV	---	---	2
28	Dos de filtre	WL20900AV	WL209000AV	WL209000AV	---	---	1
29	Joint d'étanchéité	XA010600AV	XA010600AV	XA010600AV	---	---	1
30	Adaptateur	WL002800AV	WL002800AV	WL002800AV	---	---	1
31	Boulon à tête	ST074315AV	ST074315AV	ST074315AV	ST074315AV	ST074315AV	4
32	Raccord de compression	ST159001AV	ST159001AV	ST159001AV	ST159001AV	ST159001AV	1
33	Carter de filtre avant	WL208900AV	WL208900AV	WL208900AV	WL003000AV	WL003000AV	1
34	Interrupteur de moteur	MC104500AV	MC104500AV	MC104500AV	MC104500AV	MC104500AV	1
35	Dos de filtre	---	---	---	WL001400AV	WL001400AV	1
†	Néc. de culasse (comprend les No de Réf. 1 & 31)	WL602800AJ	WL602800AJ	WL602800AJ	---	---	1
■	Néc. de plaque de soupape (Comprend No 2,3,4,5&6)	WL201400AJ	WL206400AJ	WL201400AJ	WL201400AJ	WL201400AJ	1
*	Montage d'embout arrière	WL208316AJ	WL207101AJ	WL208216AJ	WL208216AJ	WL208216AJ	1
▲	Néc. d'embout avant & rotor (Comprend No 10-14, 18 & 19)	WL208202AJ	WL203600AJ	WL208201AJ	---	---	1
●	Montage d'embout arrière (Comprend No 21-24)	---	---	---	WL208001AJ	WL208001AJ	1

REMARQUES: Les N° de Réf. 11-14 et 19 sont montés avec précision à l'usine et ne sont pas disponibles séparément.
Les pièces de rechange sans numéros sont disponibles en nécessaires seulement.

Para Ordenar Repuestos, Sírvese llamer al Concesionario más Cercano a su Domicilio

Sírvese darnos la siguiente información:

- Número del modelo
- Número de Serie (de haberlo)
- Descripción y número del repuesto según la lista de repuestos

Puede escribirnos a:

The Campbell Group / Attn: Parts Department
100 Production Drive
Harrison, OH 45030 U.S.A.

Ref. No.	Descripción	Repuestos Para Los Modelos:					Ctd.
		WL301405	WL302102	WL302502	WL300005	WL300604	
1	† Culata	†	†	†	WL0003010M	WL0003010M	1
2	■ Empaque de la culata	XA010800AV	XA010800AV	XA010800AV	XA010800AV	XA010800AV	1
3	Válvula de salida	■	■	■	■	■	1
4	Placa de la válvula	■	■	■	■	■	1
5	Válvula de entrada	■	■	■	■	■	1
6	■ Empaque del cilindro	XA010300AV	XA010301AV	XA010300AV	XA010300AV	XA10300AV	1
7	Pistón & biela con manga (incluye los Nos. 8 & 9)	WL200401AJ	WL200402AJ	WL200402AJ	WL200400AJ	WL200400AJ	1
8	Tornillo de cabeza tubular M5 x 8 x 20	ST116104AV	ST116104AV	ST116104AV	ST116104AV	ST116104AV	1
9	Arandela de calza	ST129400AV	ST129400AV	ST129400AV	ST129400AV	ST129400AV	1
10	▲ Pasador en espiral, extremo	ST158601AV	ST158601AV	ST158601AV	ST158601AV	ST158601AV	1
11	Extremo frontal	▲	▲	▲	●	●	1
12	Excéntrico	▲	▲	▲	●	●	1
13	Tornillo M6 x 1.0 x 6	▲	▲	▲	●	●	2
14	Balero	▲	▲	▲	● (2)	● (2)	1
15	Ventilador del eje	WL002401AV	WL004500AV	WL004500AV	WL002400AV	WL002401AV	1
16	Arandela	ST070928AV	ST070928AV	ST070928AV	ST070928AV	ST070928AV	1
17	Tornillo de cabeza tubular M5 x 8 x 12 (Izq.)	ST116105AV	ST116105AV	ST116105AV	ST116105AV	ST116105AV	1
18	▲ Pasador en espiral, excéntrico	ST070059AV	ST070059AV	ST070059AV	ST070059AV	ST070059AV	1
19	Rotor/eje	▲	▲	▲	●	●	1
20	Ensamblaje del estator	MC107101AJ	MC104601AV	MC120301AJ	MC106901AJ	MC107001AJ	1
21	Tornillo Hex #8-32 x 11,1 mm (7/16")	ST074407AV	ST074407AV	ST074407AV	*ST074407AV	*ST074407AV	2
22	Extremo posterior	*	*	*	*	*	1
23	* Cordón del interruptor	EC012701AV	EC012701AV	EC012701AV	EC012701AV	EC012701AV	1
24	* Relevo de tensión	MT002601AV	MT002601AV	MT002601AV	MT002600AV	MT002600AV	1
25	* Perno del motor	ST128800AV	ST128801AV	ST128801AV	ST128800AV	ST128800AV	4
26	Elemento del filtro	ST163100AV	ST163100AV	ST163100AV	WL001100AV	WL001100AV	1
27	Tornillo forma rosca de 6,4 mm (1/4)-20 x 19,1 mm (3/4")	ST120200AV	ST120200AV	ST120200AV	---	---	2
28	Parte posterior del filtro	WL20900AV	WL209000AV	WL209000AV	---	---	1
29	Empaque	XA010600AV	XA010600AV	XA010600AV	---	---	1
30	Adaptador	WL002800AV	WL002800AV	WL002800AV	---	---	1
31	Perno M6 x 55mm	ST074315AV	ST074315AV	ST074315AV	ST074315AV	ST074315AV	4
32	Conector de compresión	ST159001AV	ST159001AV	ST159001AV	ST159001AV	ST159001AV	1
33	Parte frontal de la cubierta del filtro	WL208900AV	WL208900AV	WL208900AV	WL003000AV	WL003000AV	1
34	Interruptor del motor	MC104500AV	MC104500AV	MC104500AV	MC104500AV	MC104500AV	1
35	Parte posterior del filtro	---	---	---	WL001400AV	WL001400AV	1
†	Juego de piezas de la culata (Incluye los Nos. de Ref. 1 & 31)	WL602800AJ	WL602800AJ	WL602800AJ	---	---	1
■	Juego de piezas de la placa de la válvula (incluye los Nos. de Ref. 2,3,4,5 & 6)	WL201400AJ	WL206400AJ	WL201400AJ	WL201400AJ	WL201400AJ	1
*	Ensamblaje del extremo posterior	WL208316AJ	WL207101AJ	WL208316AJ	WL208316AJ	WL208316AJ	1
▲	Juego de piezas del extremo frontal & rotor (incluye los Nos. de Ref. 10-14, 18 & 19)	WL208202AJ	WL203600AJ	WL208201AJ	---	---	1
●	Ensamblaje del extremo posterior (incluye los Nos. de Ref. 21-24)	---	---	---	WL208001AJ	WL208101AJ	1

NOTAS: Los números de Ref. 11-14 & 19 se ensamblan con precisión en la fábrica y no están disponibles por separado. Las piezas que no tienen un número asignado sólo están disponibles como parte de un juego de piezas.