

**Para Ordenar Repuestos o Asistencia Técnica, Sírvase Llamar al Distribuidor Más Cercano a Su Domicilio**

Sírvase darnos la siguiente información:

- Número del modelo
- Código impreso
- Descripción y número del repuesto según la lista de repuestos

Dirija toda la correspondencia a:

Campbell Hausfeld  
Attn: Customer Service  
100 Production Drive  
Harrison, OH 45030 U.S.A.

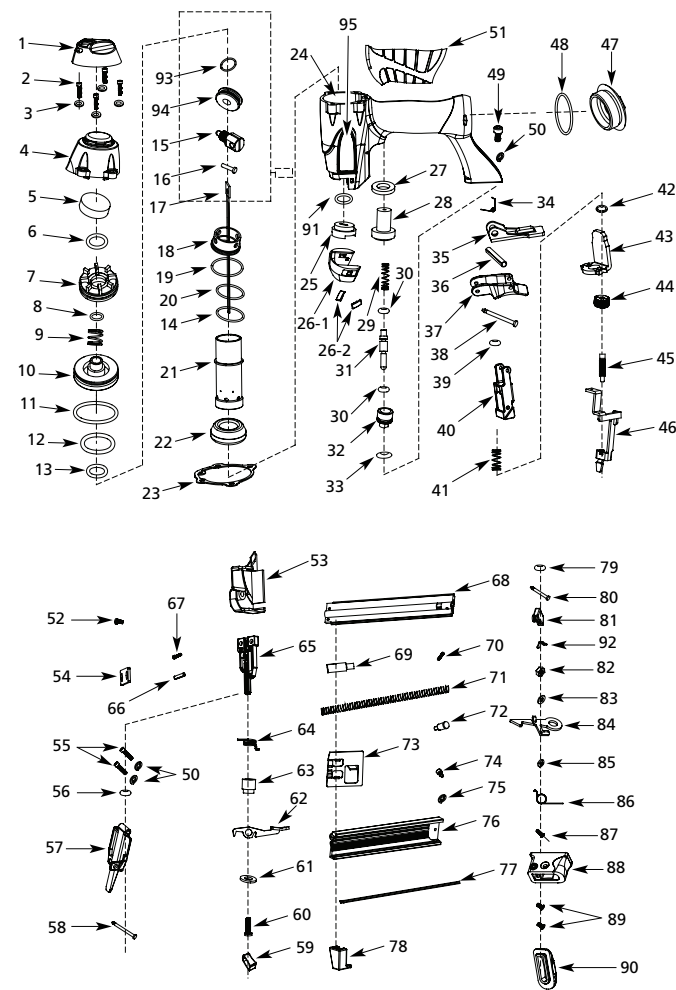
| No. de Ref. | Descripción                         | Número del Repuesto | Ctd. | No. de Ref.                         | Descripción                                     | Número del Repuesto | Ctd. |
|-------------|-------------------------------------|---------------------|------|-------------------------------------|---|---------------------|------|
| 1           | Cubierta del orificio de salida     | SV479100AV          | 1    | 54                                  | Guía de la broca principal superior             | SV484600AV          | 1    |
| 2           | Perno                               | SV479200AV          | 4    | 55                                  | Perno   | SV484700AV          | 2    |
| 3           | Arandela                            | SV479300AV          | 4    | 56                                  | Anillo en O                                     | SV484800AV          | 1    |
| 4           | Cubierta del cuerpo                 | SV479400AV          | 1    | 57                                  | Guía de la broca principal                      | SV484900AV          | 1    |
| 5           | Tope del orificio de salida         | □                   | 1    | 58                                  | Pasador del conector                            | SV485000AV          | 1    |
| 6           | Anillo en O                         | □                   | 1    | 59                                  | Cubierta de liberación rápida                   | SV485100AV          | 1    |
| 7           | Guía de la válvula                  | SV479700AV          | 1    | 60                                  | Perno   | SV485200AV          | 1    |
| 8           | Anillo en O                         | □                   | 1    | 61                                  | Arandela  | SV485300AV          | 1    |
| 9           | Resorte                             | SV479900AV          | 1    | 62                                  | Relevador del gatillo                           | SV485400AV          | 1    |
| 10          | Pistón de la válvula                | ◆                   | 1    | 63                                  | Anillo  | SV485500AV          | 1    |
| 11          | Anillo en O                         | □                   | 1    | 64                                  | Resorte   | SV485600AV          | 1    |
| 12          | Anillo en O                         | □                   | 1    | 65                                  | Guía de la broca secundaria                     | SV485700AV          | 1    |
| 13          | Anillo en O                         | □                   | 1    | 66                                  | Pasador de resorte                              | SV485800AV          | 1    |
| 14          | Anillo en O                         | □                   | 1    | 67                                  | Perno   | SV485900AV          | 1    |
| 15          | Cabeza para la paleta de impulsión  | ●                   | 1    | 68                                  | Cubierta del cargador                           | SV486000AV          | 1    |
| 16          | Pasador                             | ●                   | 1    | 69                                  | Accesorio de impulsión                          | ▲                   | 1    |
| 17          | Paleta de impulsión                 | ●                   | 1    | 70                                  | Perno   | ▲                   | 1    |
| 18          | Anillo de presión                   | SV480800AV          | 1    | 71                                  | Resorte   | SV486300AV          | 1    |
| 19          | Anillo en O                         | □                   | 1    | 72                                  | Accesorio de impulsión                          | ▲                   | 1    |
| 20          | Anillo en O                         | SV481000AV          | 1    | 73                                  | Impulsor  | ▲                   | 1    |
| 21          | Cilindro                            | SV481100AV          | 1    | 74                                  | Perno   | SV486600AV          | 1    |
| 22          | Tope del pistón principal           | SV481200AV          | 1    | 75                                  | Arandela  | SV486700AV          | 1    |
| 23          | Sello                               | □                   | 1    | 76                                  | Placa guía del cargador                         | SV486800AV          | 1    |
| 24          | Caja del cuerpo                     | SV489000AV          | 1    | 77                                  | Placa de acero                                  | SV486900AV          | 1    |
| 25          | Guía de impulsión plástica          | SV481500AV          | 1    | 78                                  | Cubierta del brazo de contacto                  | SV487000AV          | 1    |
| 26-1        | Cubierta plástica frontal           | SV489100AV          | 1    | 79                                  | Anillo en O                                     | SV487100AV          | 1    |
| 26-2        | Bumpers                             | SV488900AV          | 2    | 80                                  | Botón de llave                                  | SV487200AV          | 1    |
| 27          | Arandela                            | □                   | 1    | 81                                  | llave   | SV487300AV          | 1    |
| 28          | Separador de la válvula del gatillo | SV481800AV          | 1    | 82                                  | Tuerca  | SV487400AV          | 1    |
| 29          | Resorte                             | SV481900AV          | 1    | 83                                  | Arandela  | SV487500AV          | 1    |
| 30          | Anillo en O                         | □                   | 2    | 84                                  | Fiador del alimentador                          | SV487600AV          | 1    |
| 31          | Vástago de la válvula del gatillo   | SV482100AV          | 1    | 85                                  | Eje   | SV487700AV          | 1    |
| 32          | Cubierta del interruptor neumático  | SV482200AV          | 1    | 86                                  | Resorte   | SV487800AV          | 1    |
| 33          | Anillo en O                         | □                   | 1    | 87                                  | Perno   | SV487900AV          | 1    |
| 34          | Resorte del gatillo                 | ▼                   | 1    | 88                                  | Tope  | SV488000AV          | 1    |
| 35          | Gatillo secundario                  | ▼                   | 1    | 89                                  | Perno   | SV488100AV          | 2    |
| 36          | Pasador de resorte                  | ▼                   | 1    | 90                                  | Accesorio de retención                          | SV488200AV          | 1    |
| 37          | Gatillo principal                   | ▼                   | 1    | 91                                  | Anillo en O                                     | □                   | 1    |
| 38          | Botón                               | ▼                   | 1    | 92                                  | Plaqueta  | SV488400AV          | 1    |
| 39          | Anillo en O                         | □                   | 1    | 93                                  | Anillo en O                                     | ●                   | 1    |
| 40          | Protección del brazo de contacto    | SV483000AV          | 1    | 94                                  | Pistón principal                                | ●                   | 1    |
| 41          | Resorte                             | SV483100AV          | 1    | 95                                  | Etiqueta adhesiva Polydome                      | SV488800AV          | 2    |
| 42          | Bague en E                          | SV483200AV          | 1    | <b>JUEGOS DE PIEZAS DE REPUESTO</b> |   |                     |      |
| 43          | Brazo de contacto superior          | SV483300AV          | 1    | ▲                                   | Ensamblaje del disparador                       | SKN00100AV          |      |
| 44          | Carrete ajustable                   | SV483400AV          | 1    | ■                                   | Juego de anillos en o de la válvula del gatillo | SKN00200AV          |      |
| 45          | Perno                               | SV483600AV          | 1    | ●                                   | Juego del impulsor                              | SKN00700AV          |      |
| 46          | Brazo de contacto                   | SV483700AV          | 1    | ◆                                   | Ensamble de válvula de equilibrio               | SKN00400AV          |      |
| 47          | Tapa trasera del cuerpo             | SV489200AV          | 1    | ▼                                   | Ensamblaje del gatillo                          | SKN00500AV          |      |
| 48          | Anillo en O                         | SV484000AV          | 1    | □                                   | Juego completo de anillos en O de repuestos     | SKN00800AV          |      |
| 49          | Perno                               | SV484100AV          | 1    |                                     |   |                     |      |
| 50          | Arandela                            | SV484200AV          | 3    |                                     |   |                     |      |
| 51          | Mango de goma                       | SV484300AV          | 1    |                                     |   |                     |      |
| 52          | Perno                               | SV484400AV          | 1    |                                     |   |                     |      |
| 53          | Cubierta plástica                   | SV484500AV          | 1    |                                     |   |                     |      |



**Brad Nailer**  
**Cloueuse à clous sans tête**  
**Clavadora para acabado**

Replacement Parts Manual  
Manuel de pièces de rechange  
Lista de Repuestos

CHN10100



## For Replacement Parts or Technical Assistance, call 1-800-543-6400

Please provide following information:

- Model number
- Serial number (if any)
- Part description and number as shown in parts list

| Ref. No. | Description           | Part Number | Qty. |
|----------|-----------------------|-------------|------|
| 1        | Exhaust cover         | SV479100AV  | 1    |
| 2        | Bolt                  | SV479200AV  | 4    |
| 3        | Washer                | SV479300AV  | 4    |
| 4        | Body cap              | SV479400AV  | 1    |
| 5        | Exhaust bumper        | □           | 1    |
| 6        | O-ring                | □           | 1    |
| 7        | Valve guide           | SV479700AV  | 1    |
| 8        | O-ring                | □◆          | 1    |
| 9        | Spring                | SV479900AV  | 1    |
| 10       | Valve piston          | ◆           | 1    |
| 11       | O-ring                | □◆          | 1    |
| 12       | O-ring                | □◆          | 1    |
| 13       | O-ring                | □◆          | 1    |
| 14       | O-ring                | □           | 1    |
| 15       | Head for driver blade | ●           | 1    |
| 16       | Pin                   | ●           | 1    |
| 17       | Driver blade          | ●           | 1    |
| 18       | Press ring            | SV480800AV  | 1    |
| 19       | O-ring                | □           | 1    |
| 20       | O-ring                | SV481000AV  | 1    |
| 21       | Cylinder              | SV481100AV  | 1    |
| 22       | Main piston stop      | SV481200AV  | 1    |
| 23       | Seal                  | □           | 1    |
| 24       | Body housing          | SV489000AV  | 1    |
| 25       | Plastic driver guide  | SV481500AV  | 1    |
| 26-1     | Front plastic cover   | SV489100AV  | 1    |
| 26-2     | Bumpers               | SV488900AV  | 2    |
| 27       | Washer                | □■          | 1    |
| 28       | Trigger valve cage    | SV481800AV  | 1    |
| 29       | Spring                | SV481900AV  | 1    |
| 30       | O-ring                | □■          | 2    |
| 31       | Trigger valve stem    | SV482100AV  | 1    |
| 32       | Air switch cover      | SV482200AV  | 1    |
| 33       | O-ring                | □■          | 1    |
| 34       | Trigger spring        | ▼           | 1    |
| 35       | Secondary trigger     | ▼           | 1    |
| 36       | Spring pin            | ▼           | 1    |
| 37       | Main trigger          | ▼           | 1    |
| 38       | Button                | ▼           | 1    |
| 39       | O-ring                | □▼■         | 1    |
| 40       | Contact arm guard     | SV483000AV  | 1    |
| 41       | Spring                | SV483100AV  | 1    |
| 42       | E-ring                | SV483200AV  | 1    |
| 43       | Upper contact arm     | SV483300AV  | 1    |
| 44       | Adjustable reel       | SV483400AV  | 1    |
| 45       | Bolt                  | SV483600AV  | 1    |
| 46       | Contact arm           | SV483700AV  | 1    |
| 47       | Rear body cap         | SV489200AV  | 1    |
| 48       | O-ring                | SV484000AV  | 1    |
| 49       | Bolt                  | SV484100AV  | 1    |
| 50       | Washer                | SV484200AV  | 3    |
| 51       | Rubber grip           | SV484300AV  | 1    |
| 52       | Bolt                  | SV484400AV  | 1    |

Address any correspondence to:

Campbell Hausfeld  
Attn: Customer Service  
100 Production Drive  
Harrison, OH 45030 U.S.A.

| Ref. No. | Description          | Part Number | Qty. |
|----------|----------------------|-------------|------|
| 53       | Plastic cover        | SV484500AV  | 1    |
| 54       | Upper main bit guide | SV484600AV  | 1    |
| 55       | Bolt                 | SV484700AV  | 2    |
| 56       | O-ring               | SV484800AV  | 1    |
| 57       | Main bit guide       | SV484900AV  | 1    |
| 58       | Connector pin        | SV485000AV  | 1    |
| 59       | Quick release cover  | SV485100AV  | 1    |
| 60       | Bolt                 | SV485200AV  | 1    |
| 61       | Washer               | SV485300AV  | 1    |
| 62       | Release trigger      | SV485400AV  | 1    |
| 63       | Ring                 | SV485500AV  | 1    |
| 64       | Spring               | SV485600AV  | 1    |
| 65       | Secondary bit guide  | SV485700AV  | 1    |
| 66       | Spring pin           | SV485800AV  | 1    |
| 67       | Bolt                 | SV485900AV  | 1    |
| 68       | Magazine cover       | SV486000AV  | 1    |
| 69       | Pusher attachment    | ▲           | 1    |
| 70       | Bolt                 | ▲           | 1    |
| 71       | Spring               | SV486300AV  | 1    |
| 72       | Pusher attachment    | ▲           | 1    |
| 73       | Pusher               | ▲           | 1    |
| 74       | Bolt                 | SV486600AV  | 1    |
| 75       | Washer               | SV486700AV  | 1    |
| 76       | Magazine guide board | SV486800AV  | 1    |
| 77       | Steel plate          | SV486900AV  | 1    |
| 78       | Contact arm cover    | SV487000AV  | 1    |
| 79       | O-ring               | SV487100AV  | 1    |
| 80       | Key button           | SV487200AV  | 1    |
| 81       | Key                  | SV487300AV  | 1    |
| 82       | Nut                  | SV487400AV  | 1    |
| 83       | Washer               | SV487500AV  | 1    |
| 84       | Pawl of feeder       | SV487600AV  | 1    |
| 85       | Shaft                | SV487700AV  | 1    |
| 86       | Spring               | SV487800AV  | 1    |
| 87       | Bolt                 | SV487900AV  | 1    |
| 88       | Stopper              | SV488000AV  | 1    |
| 89       | Bolt                 | SV488100AV  | 2    |
| 90       | Stopper attachment   | SV488200AV  | 1    |
| 91       | O-ring               | □           | 1    |
| 92       | Scaleboard           | SV488400AV  | 1    |
| 93       | O-ring               | ●□          | 1    |
| 94       | Main piston          | ●           | 1    |
| 95       | Polydome decal       | SV488800AV  | 2    |

### REPLACEMENT PARTS KITS

|   |                                 |            |
|---|---------------------------------|------------|
| ▲ | Pusher assembly                 | SKN00100AV |
| ■ | Trigger valve o-ring kit        | SKN00200AV |
| ● | Driver kit                      | SKN00700AV |
| ◆ | Balance valve assembly          | SKN00400AV |
| ▼ | Trigger assembly                | SKN00500AV |
| □ | Complete o-ring replacement kit | SKN00800AV |

## Pour Pièces de Rechange ou assistance technique, appeler 1-800-543-6400

S'il vous plaît fournir l'information suivante:

- Numéro de Modèle
- Numéro de série (si présent)
- Description et numéro de la pièce

Adresser toute correspondance à

Campbell Hausfeld  
Attn: Customer Service  
100 Production Drive  
Harrison, OH 45030 U.S.A.

| N° de Réf. | Description                             | N° de Pièce | Qté. |
|------------|---|-------------|------|
| 1          | Couvercle d'échappement                 | SV479100AV  | 1    |
| 2          | Boulon                                  | SV479200AV  | 4    |
| 3          | Rondelle                                | SV479300AV  | 4    |
| 4          | Capuchon du corps                       | SV479400AV  | 1    |
| 5          | Butoir d'échappement                    | □           | 1    |
| 6          | Joint torique                           | □           | 1    |
| 7          | Guide de soupape                        | SV479700AV  | 1    |
| 8          | Joint torique                           | □◆          | 1    |
| 9          | Ressort                                 | SV479900AV  | 1    |
| 10         | Piston de soupape                       | ◆           | 1    |
| 11         | Joint torique                           | □◆          | 1    |
| 12         | Joint torique                           | □◆          | 1    |
| 13         | Joint torique                           | □◆          | 1    |
| 14         | Joint torique                           | □           | 1    |
| 15         | Tête de lame d'entraînement             | ●           | 1    |
| 16         | Goupille                                | ●           | 1    |
| 17         | Lame d'entraînement                     | ▲           | 1    |
| 18         | Anneau emmanché                         | SV480800AV  | 1    |
| 19         | Joint torique                           | □           | 1    |
| 20         | Joint torique                           | SV481000AV  | 1    |
| 21         | Cylindre                                | SV481100AV  | 1    |
| 22         | Butée de piston principale              | SV481200AV  | 1    |
| 23         | Joint                                   | □           | 1    |
| 24         | Bâti du moteur                          | SV489000AV  | 1    |
| 25         | Guide d'entraînement de plastique       | SV481500AV  | 1    |
| 26-1       | Couvercle avant de plastique            | SV489100AV  | 1    |
| 26-2       | Bumpers                                 | SV488900AV  | 2    |
| 27         | Rondelle                                | □■          | 1    |
| 28         | Lanterne de soupape de gâchette         | SV481800AV  | 1    |
| 29         | Ressort                                 | SV481900AV  | 1    |
| 30         | Joint torique                           | □■          | 2    |
| 31         | Tige de soupape de gâchette             | SV482100AV  | 1    |
| 32         | Couvercle d'interrupteur de débit d'air | SV482200AV  | 1    |
| 33         | Joint torique                           | □■          | 1    |
| 34         | Ressort de gâchette                     | ▼           | 1    |
| 35         | Gâchette secondaire                     | ▼           | 1    |
| 36         | Goupille à ressort                      | ▼           | 1    |
| 37         | Gâchette principale                     | ▼           | 1    |
| 38         | Bouton                                  | ▼           | 1    |
| 39         | Joint torique                           | □▼■         | 1    |
| 40         | Protecteur de bras de contact           | SV483000AV  | 1    |
| 41         | Ressort                                 | SV483100AV  | 1    |
| 42         | Bague en E                              | SV483200AV  | 1    |
| 43         | Bras de contact supérieur               | SV483300AV  | 1    |
| 44         | Dévidoir réglable                       | SV483400AV  | 1    |
| 45         | Boulon                                  | SV483600AV  | 1    |
| 46         | Bras de contact                         | SV483700AV  | 1    |
| 47         | Capuchon du corps arrière               | SV489200AV  | 1    |
| 48         | Joint torique                           | SV484000AV  | 1    |
| 49         | Boulon                                  | SV484100AV  | 1    |
| 50         | Rondelle                                | SV484200AV  | 3    |
| 51         | Prise de caoutchouc                     | SV484300AV  | 1    |
| 52         | Boulon                                  | SV484400AV  | 1    |

| N° de Réf. | Description                        | N° de Pièce | Qté. |
|------------|------------------------------------|-------------|------|
| 53         | Couvercle de plastique             | SV484500AV  | 1    |
| 54         | Guide de foret principal supérieur | SV484600AV  | 1    |
| 55         | Boulon                             | SV484700AV  | 2    |
| 56         | Joint torique                      | SV484800AV  | 1    |
| 57         | Guide de foret principal           | SV484900AV  | 1    |
| 58         | Goupille de connecteur             | SV485000AV  | 1    |
| 59         | Couvercle de dégagement rapide     | SV485100AV  | 1    |
| 60         | Boulon                             | SV485200AV  | 1    |
| 61         | Rondelle                           | SV485300AV  | 1    |
| 62         | Gâchette de dégagement             | SV485400AV  | 1    |
| 63         | Bague                              | SV485500AV  | 1    |
| 64         | Ressort                            | SV485600AV  | 1    |
| 65         | Guide de foret secondaire          | SV485700AV  | 1    |
| 66         | Goupille à ressort                 | SV485800AV  | 1    |
| 67         | Boulon                             | SV485900AV  | 1    |
| 68         | Couvercle de chargeur              | SV486000AV  | 1    |
| 69         | Accessoire poussoir                | ▲           | 1    |
| 70         | Boulon                             | ▲           | 1    |
| 71         | Ressort                            | SV486300AV  | 1    |
| 72         | Accessoire poussoir                | ▲           | 1    |
| 73         | Poussoir                           | ▲           | 1    |
| 74         | Boulon                             | SV486600AV  | 1    |
| 75         | Rondelle                           | SV486700AV  | 1    |
| 76         | Plateau du guide de chargeur       | SV486800AV  | 1    |
| 77         | Plaque d'acier                     | SV486900AV  | 1    |
| 78         | Couvercle de bras contact          | SV487000AV  | 1    |
| 79         | Joint torique                      | SV487100AV  | 1    |
| 80         | Bouton de vis de réglage           | SV487200AV  | 1    |
| 81         | Clé                                | SV487300AV  | 1    |
| 82         | Écrou                              | SV487400AV  | 1    |
| 83         | Rondelle                           | SV487500AV  | 1    |
| 84         | Cliquet du distributeur            | SV487600AV  | 1    |
| 85         | Arbre                              | SV487700AV  | 1    |
| 86         | Ressort                            | SV487800AV  | 1    |
| 87         | Boulon                             | SV487900AV  | 1    |
| 88         | Butoir                             | SV488000AV  | 1    |
| 89         | Boulon                             | SV488100AV  | 2    |
| 90         | Accessoire d'obturateur            | SV488200AV  | 1    |
| 91         | Joint torique                      | □           | 1    |
| 92         | Échelle                            | SV488400AV  | 1    |
| 93         | Joint torique                      | ●□          | 1    |
| 94         | Piston principale                  | ●           | 1    |
| 95         | Décals de polydôme                 | SV488800AV  | 2    |

### TROUSSES DE PIÈCES DE RECHANGE

|   |   |            |
|---|---|------------|
| ▲ | Poussoir équipé                                   | SKN00100AV |
| ■ | Trousse de joint torique de soupape de gâchette   | SKN00200AV |
| ● | Trousse d'entraînement                            | SKN00700AV |
| ◆ | Montage de soupape d'équilibrage                  | SKN00400AV |
| ▼ | Gâchette équipée                                  | SKN00500AV |
| □ | Nécessaire de rechange complet de joints toriques | SKN00800AV |